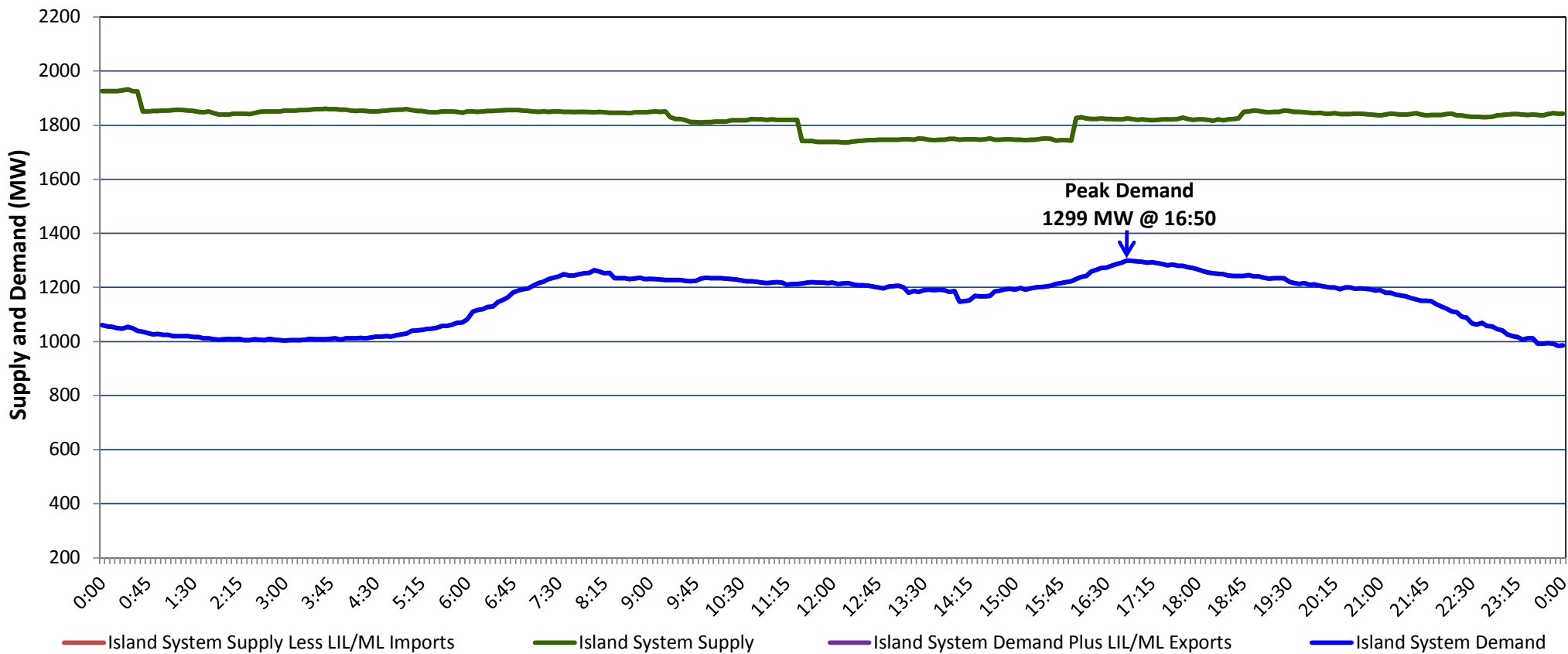


Newfoundland Labrador Hydro (NLH)  
Supply and Demand Status Report Filed Tuesday, November 27, 2018

Section 1  
Island Interconnected System Supply, Demand & Exports  
Actual 24 Hour System Performance For Monday, November 26, 2018



Supply Notes For November 26, 2018		1,2
A	As of 0729 hours, November 09, 2018, Stephenville Gas Turbine available at 25 MW (50 MW).	
B	As of 2303 hours, November 24, 2018, Holyrood Unit 1 available at 140 MW (170 MW).	
C	At 0034 hours, November 26, 2018, Hinds Lake Unit unavailable due to planned outage (75 MW).	
D	At 0919 hours, November 26, 2018, Hardwoods Gas Turbine unavailable due to planned outage 25 MW (50 MW).	
E	At 1128 hours, November 26, 2018, Bay d'Espoir Unit4 unavailable due to planned outage (76.5 MW)	
F	At 1600 hours, November 26, 2018, Bay d'Espoir Unit4 available (76.5 MW)	
G	At 1844 hours, November 26, 2018, Hardwoods Gas Turbine available at 25 MW (50 MW).	

Section 2  
Island Interconnected Supply and Demand

Tue, Nov 27, 2018		Island System Outlook <sup>3</sup>		Seven-Day Forecast		Temperature (°C)		Island System Daily Peak Demand (MW)	
						Morning	Evening	Forecast	Adjusted <sup>7</sup>
Available Island System Supply: <sup>5</sup>		1,835	MW	Tuesday, November 27, 2018		3	2	1,285	1,190
NLH Island Generation: <sup>4</sup>		1,540	MW	Wednesday, November 28, 2018		2	2	1,335	1,240
NLH Island Power Purchases: <sup>6</sup>		95	MW	Thursday, November 29, 2018		3	1	1,375	1,279
Other Island Generation:		200	MW	Friday, November 30, 2018		2	0	1,360	1,264
ML/LIL Imports:		-	MW	Saturday, December 01, 2018		0	-1	1,330	1,235
Current St. John's Temperature & Windchill: 2 °C		N/A	°C	Sunday, December 02, 2018		-2	0	1,290	1,195
7-Day Island Peak Demand Forecast:		1,375	MW	Monday, December 03, 2018		1	0	1,285	1,190

Supply Notes For November 27, 2018		3
------------------------------------	--	---

- Notes:
- Generation outages for running and corrective maintenance are included. These are not unusual for power system operations. They generally do not impact customer supply. The power system operators schedule outages to system equipment whenever possible to coincide with periods when customer demands are low and sufficient supply reserves are available. However, from time to time equipment outages are necessary and reserves may be impacted.
  - Due to the Island system having no synchronous connections to the larger North American grid, when there is a sudden loss of large generating units there may be a requirement for some customer's load to be interrupted for short periods to bring generation output equal to customer demand. This automatic action of power system protection, referred to as under frequency load shedding (UFLS), is necessary to ensure the integrity and reliability of system equipment. Under frequency events have typically occurred 5 to 8 times per year on the Island Interconnected System and the resultant customer load interruptions are generally less than 30 minutes. With the activation of the Maritime Link frequency controller during the winter of 2018, UFLS events have occurred less frequently.
  - As of 0800 Hours.
  - Gross output including station service at Holyrood (24.5 MW) and improved NLH hydraulic output due to water levels (35 MW).
  - Gross output from all Island sources (including Note 4).
  - NLH Island Power Purchases include: CBPP Co-Gen, Nalcor Exploits, Rattle Brook, Star Lake, Wind Generation and capacity assistance (when applicable).
  - Adjusted for curtailable load, market activities and the impact of voltage reduction when applicable.

Section 3  
Island Peak Demand Information  
Previous Day Actual Peak and Current Day Forecast Peak

Mon, Nov 26, 2018	Actual Island Peak Demand <sup>8</sup>	16:50	1,299 MW
Tue, Nov 27, 2018	Forecast Island Peak Demand		1,285 MW

Notes: 8. Island Demand / LIL / ML Exports (where applicable) is supplied by NLH generation and purchases, plus generation owned and operated by Newfoundland Power and Corner Brook Pulp & Paper (Deer Lake Power, DLP).